



SAPPORO CITY UNIVERSITY



Sapporo City University (SCU) is a public university in Sapporo, Hokkaido. The university was established in 2006 by merging its predecessors – Sapporo Nursing School established in 1965 and Sapporo School of the Arts established in 1991.

SCU specializes in two academic fields – Design and Nursing, and is characterized by its education, research and regional contribution through D × N (design and/by nursing) interdisciplinary cooperation.

Philosophies

Respect for human life

Since both design and nursing are academic fields for humans, SCU trains students to be professionals who can create safe and comfortable lives.

Contribution to the regional community

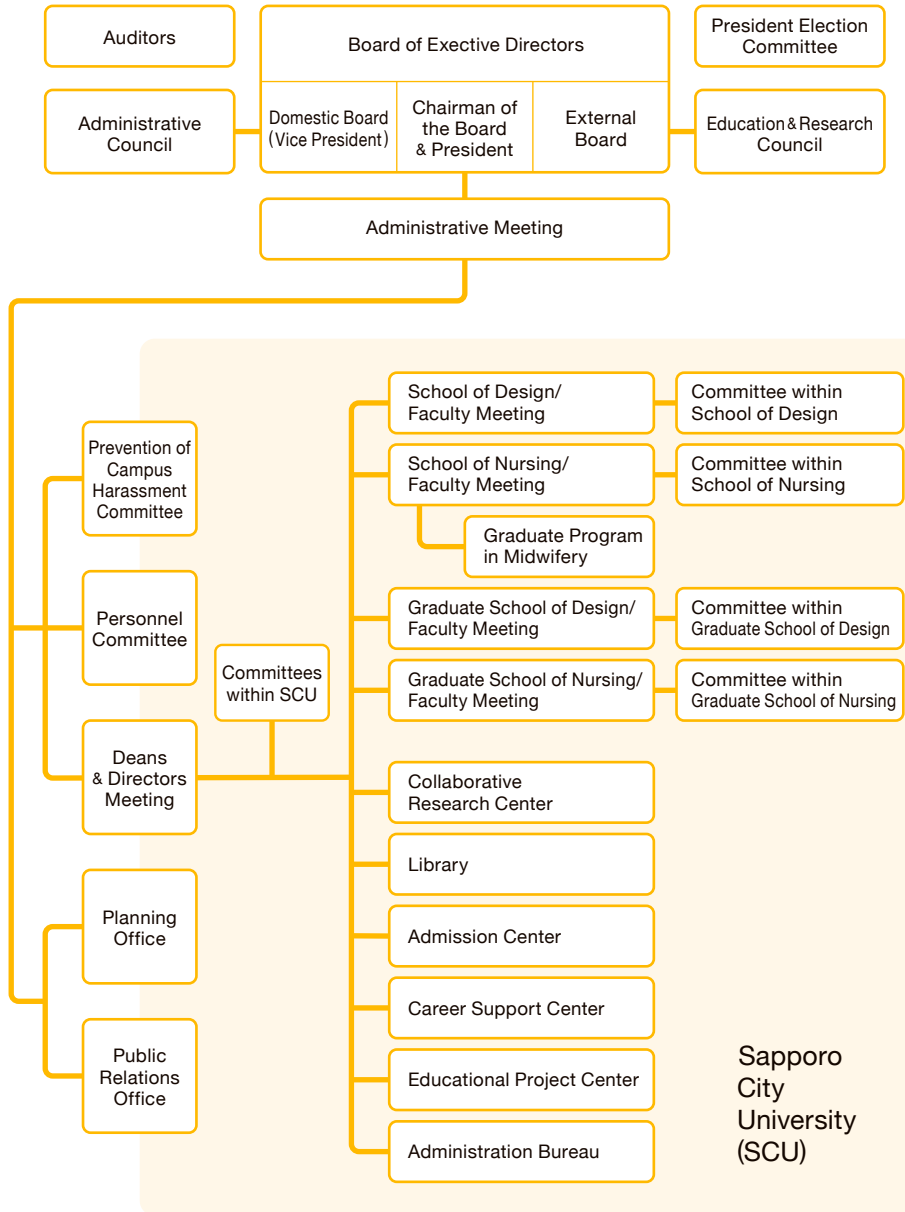
SCU aims to be a university that is open to and supportive of the public, and that people of Sapporo can be proud of.



Organization

Organization Chart

Public University Corporation Sapporo City University



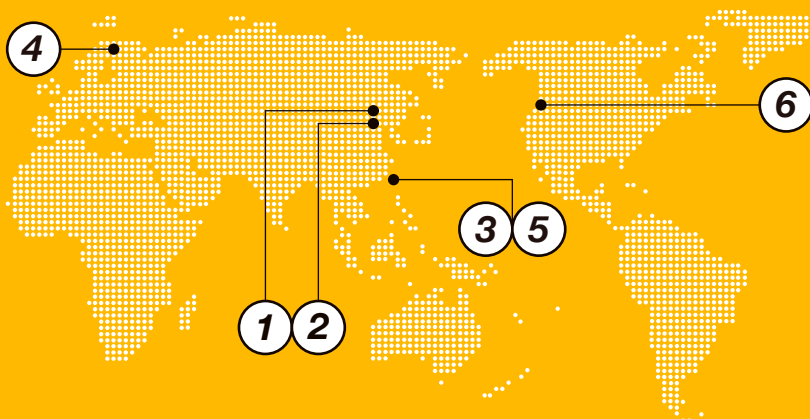
Library

Both the Geijutsu-no-mori campus and the Soen campus have libraries.

Geijutsu-no-mori campus library



Soen campus library



International Program

SCU has signed academic exchange agreements with the following universities overseas:

- ① Chengde Medical University (Chengde, China)
- ② Academy of Arts & Design, Tsinghua University (Beijing, China)
- ③ Huaan University (New Taipei City, Taiwan)
- ④ University of Lapland (Rovaniemi, Finland)
- ⑤ National Taichung University of Science and Technology (Taichung, Taiwan)
- ⑥ Pacific Northwest College of Art (Portland, United States)

Research

SCU participates in Sapporo City's urban development project and R&D projects of companies and research institutes, and is active in sharing its research results and other intellectual properties with the regional community.



Roles of environmental arts in the northern regions



Child care guidance for parents of high-risk groups for DDH(Developmental Dysplasia of the Hip) in Mongolia



Mechatro-tsumiki : Mechatronic-system-embedded Building blocks integrating the characteristics of wood materials



The container which can remove the needle without touching the tip of the syringe

Contribution to the regional community

Aiming to be a university that is “open to and supportive of the public and that people of Sapporo can be proud of,” SCU is conducting a variety of projects.



A playful design connecting your brain, heart and body, and its implementation



This is installation art displayed in the lobby of a hospital, an *objet d'art* of a village made of wood. It decorates the waiting space while expressing a “house”, the cornerstone of the heart



Short-term student exchange program with National Taichung University of Science and Technology



Design workshop with students of Pacific Northwest College of Art

Design

School of Design

The School of Design consists of two courses – “Spatial Design for Human Life” and “Communication Design for Human Life.” The School fosters highly professional human resources with comprehensive viewpoints and ideas. Its cross-disciplinary curriculum allows students of both courses to build a study model depending on their future career goals.

▶ Course of Spatial Design for Human Life

This course provides specialized education on design methods to support people’s everyday lives from the aspects of architectural design and regional development.

Students can focus on the following three fields:

- Architectural / environmental design
- Community design
- Comprehensive spatial design for human life

▶ Course of Communication Design for Human Life

This course provides specialized education on design methods for products and information that make people’s lives comfortable and pleasant.

Students can focus on the following three fields:

- Product design
- Information design
- Comprehensive communication design for human life

Fields of activities of the graduates of the School of Design

-Designer

They are playing active roles as designers in various fields.

-Management positions in companies

Even those working in companies not related to design are making the most of their design ability.

-Government employees

Graduates employed by Sapporo City Government and other government offices are displaying their design ability.

-Graduate school

Ten to twenty percent of the graduates of the School of Design advance to graduate schools.



Graduate School of Design

► Master's Program

This program fosters human resources with not only advanced professional design ability, but also the following abilities:

1. Ability to solve problems
2. Creativity
3. Planning and adjusting ability
4. Practical competence



Degree

Master of Design

Note: Students who acquire a Master of Design are expected to play active roles in the following fields:

- Architecture
- Manufacturing
- Advertisement / publication
- Tourism, information and other service industries, etc.

Research fields

The program has two fields –

"Spatial Design for Human Life" and "Communication Design for Human Life."

► Doctoral Program

In addition to advanced professional design ability, this program fosters students with abilities to:

1. discover / analyze / solve problems
2. perform research
3. make adjustments
4. demonstrate leadership



Degree

Doctor of Design

Note: Students who acquire a Doctor of Design degree are expected to play active roles in the following positions:

- Supervisors of plan development, design and other departments
- Researchers at public research institutes, think tanks, etc.
- Educators / researchers at universities and other higher education institutions, etc.

Research fields

The program has two fields –

"Spatial Design for Human Life" and "Communication Design for Human Life"

D × N

"Freshman Collaborative Seminar," "Practical Design Seminar," and other courses are provided. These courses are designed for students of the School of Nursing to get together and for students of other departments to improve their communication skills and cultivate their abilities in their different fields.

Freshman Collaborative Seminar



Proposal on an app for encouraging young people to donate their blood



Proposal on a card game which helps children learn about a healthy lifestyle



Proposal on a spa facility which can attract many customers and which everyone can enjoy

education

um of Inter-Department Cooperation” and allow students of the School of Design and form a team to address a project, improve ability to cooperate with people from

Practicum of Inter-Department Cooperation



Distribution of brochures and provision of workshops which can raise local residents' awareness of disaster prevention



Proposal on a technique for making the local space lovable as an artwork, thereby revitalizing the region



Proposal on a magazine which can vitalize and continue exchange of local residents with people from outside the region

School of Nursing

To ensure acquisition of practical nursing skills in four years, students study from the “Introduction” to “Nursing Theory,” “Nursing Skills” and “Clinical Practice” step by step. Exercises and practical training start in the first year to allow students to acquire the attitude and practical skills as nurses in an early stage. Students who complete this program will be qualified to take the national examination for nurses, and students who obtain all necessary credits in the public health nurse course will be qualified to take the national examination for public health nurses.

Students must receive education in the following nine nursing fields in four years:

- Fundamental Nursing
- Child Health Nursing
- Maternal Nursing
- Adult Nursing
- Gerontological Nursing
- Psychiatric / Mental Health Nursing
- Home Healthcare Nursing
- Nursing Management
- Public Health Nursing

Objective structured clinical examination (OSCE)

OSCE is a simulation education system to objectively check the degree of acquisition of clinical skills required in nursing. Through nursing practices for simulated patients, practical nursing skills based on the learning goals of each year are fostered. Participation in OSCE is non-compulsory to give students freedom to study on their own initiative.



▶ Graduate Program in Midwifery

The Graduate Program for Midwifery provides one-year education in midwifery to students who have learned nursing. It provides a wide range of advanced knowledge and accurate skills in midwifery, and trains students to contribute to improvement of maternal health in the local community with a sense of responsibility and morality. Roles of midwives have expanded dramatically with the rapid aging and declining birthrate.

As the first graduate program in midwifery for four-year universities in Hokkaido, the program aims to provide indirect support for the creation of an environment where mothers can give birth to and raise children without worries.



Nursing

Graduate School of Nursing

▶ Master's Program

This program fosters students with abilities to:

1. conduct advanced clinical nursing practice and demonstrate leadership
2. act and assess based on ethical judgments
3. look toward the future of nursing and conduct research that can be put into practice
4. understand advantages of regional characteristics and solve challenges



Degree

Master of Nursing

Note: Students who obtain a Master of Nursing degree are expected to play active roles in the following positions:

-Advanced professionals -Nursing managers -Researchers / educators, etc.

Research fields/qualifications

Field	Area	Specialized department
Practical Nursing	Community Health Nursing	Public Health Nursing / Home Healthcare Nursing* / Gerontological Nursing
	Maternal & Child Health Nursing	Maternal Nursing / Child Health Nursing*
	Adult Nursing	Acute Illness Nursing* / Chronic Nursing / Oncology Nursing*
	Psychiatric Mental Health Nursing	Psychiatric Mental Health Nursing*
	Nursing Skills	Nursing Skills
Nursing Management	Nursing Education & Nursing Management	Nursing Education / Nursing Management

Specialized department with an asterisk (*) also have certified nurse specialist (CNS) courses. Students who have completed CNS courses are qualified to take the examination for certification of nurse specialists. Students who have completed the study of nursing management in the area of Nursing Education & Management are qualified to take the examination for certification of Certified Nurse Administrator. To be qualified to take these examinations, students are also required to have a public health nurse, midwife or registered nurse license and have completed a certain period of practical training.

▶ Doctoral Program

This program fosters human resources with the following abilities:

1. Ability to conduct technical development and system design for future nursing
2. Excellent management ability based on ethical judgments
3. Ability to independently promote nursing science



Degree

Doctor of Nursing

Research fields

Field	
Practical Nursing	Gerontological Nursing / Home Healthcare Nursing / Maternal Nursing / Child Health Nursing / Acute Illness Nursing / Psychiatric Mental Health Nursing
Functional Nursing	Public Health Nursing / Nursing Education
Nursing Skills	Nursing Skills

Access

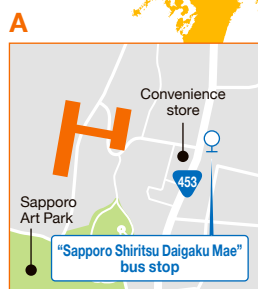
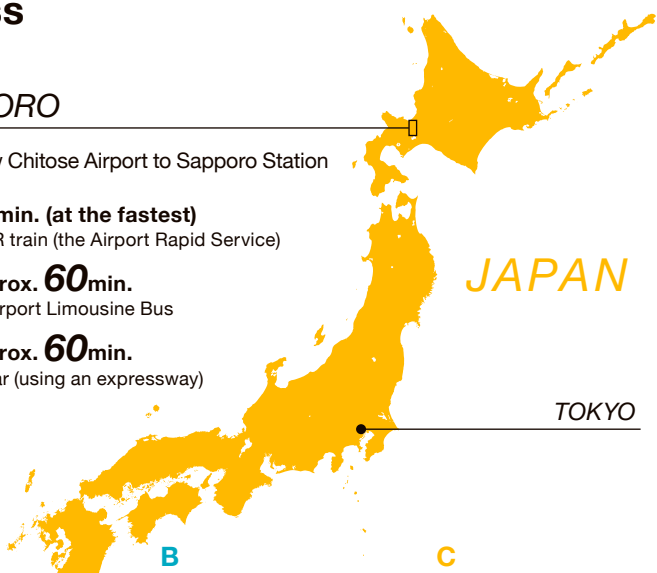
SAPPORO

From New Chitose Airport to Sapporo Station

 **37min. (at the fastest)**
by JR train (the Airport Rapid Service)

 **Approx. 60min.**
by Airport Limousine Bus

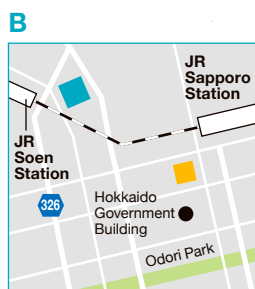
 **Approx. 60min.**
by car (using an expressway)



Geijutsu-no-mori Campus



Geijutsu-no-mori 1, Minami-ku,
Sapporo 005-0864, JAPAN

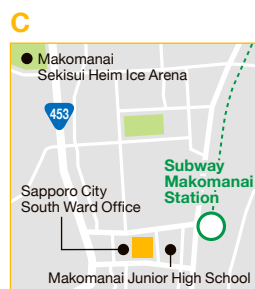


Soen Campus



Kita11 Nishi13, Chuo-ku, Sapporo
060-0011, JAPAN

Satellite Campus
ASTY45 12F, Kita4 Nishi5, Chuo-ku,
Sapporo 060-0004, JAPAN



Makomanai Campus

Makomaru, Saiwaicho 2,
Makomanai, Minami-ku, Sapporo
005-0014, JAPAN

Data (as of May 2019)

No. of students

D
Design

School of Design: **373**
Note: Including international students
(3 from China and 1 from South Korea)

Graduate School of Design: **49**
Note: Including international students
(17 from China)



N
Nursing

School of Nursing: **348**

Graduate School of Nursing: **37**

Graduate Program
in Midwifery: **10**

No. of full-time instructors



77

No. of students per instructor



11

No. of books in the library (as of March 2020)



125,208

Geijutsu-no-mori campus: 82814
Soen campus: 42394

Operating expenses (FY 2019)



JPY 2,159,421,000

Contact information

International program

crc@scu.ac.jp

International students
(School of Design, Graduate School of Design)

gakusei@scu.ac.jp

International students
(Graduate School of Nursing)

souen@scu.ac.jp

Sapporo City University
website (English version)

<https://www.scu.ac.jp/english/>

